

RED MOUNTAIN / MESA SUBMARKET

# RETAIL SPACE FOR LEASE

# 2,532± SF

POWER PLAZA NEIGHBORHOOD CENTER

345 S POWER ROAD | UNIT 105 | MESA, ARIZONA 85206

**SUITE 105**

**OPEN RETAIL  
END CAP UNIT!**



Contact John or Suzanne for additional information:



**John Quatrini**  
Associate Broker  
john@shellcommercial.com  
O (480) 443-3992  
C (602) 859-0506



**Suzanne Enright**  
Senior Associate  
suzanne@shellcommercial.com  
O (480) 443-3992  
C (602) 471-2981



O 480 443 3992 16410 N 91st Street  
Suite 112 Scottsdale, AZ 85260  
shellcommercial.com

The above is subject to prior sales and leasing. This information has been secured from sources we believe to be reliable, but we make no representation or warranties, expressed or implied as to the accuracy of this information.

345 S POWER ROAD | UNIT 105 | MESA, ARIZONA 85206

SIGNAGE



NEAR ALBERTSONS FOR GREAT EXPOSURE

EXCELLENT SIGNAGE VISIBILITY



END CAP UNIT NEAR HANDICAP PARKING & RAMP

**SIZE:** 2,530± SF

**TYPE:** Retail space with open floor plan, private office, two (2) work rooms, restroom

**LOCATION:**

- Less than 2 miles from U.S. 60 Superstition Freeway
- Traffic exposure averaging 32k± vehicles per day - Southern Ave. & Power Rd.

**ZONING:** C-2, City Of Mesa

**USES:**

- Retail / dining
- Professional office
- Services
- Community organizations

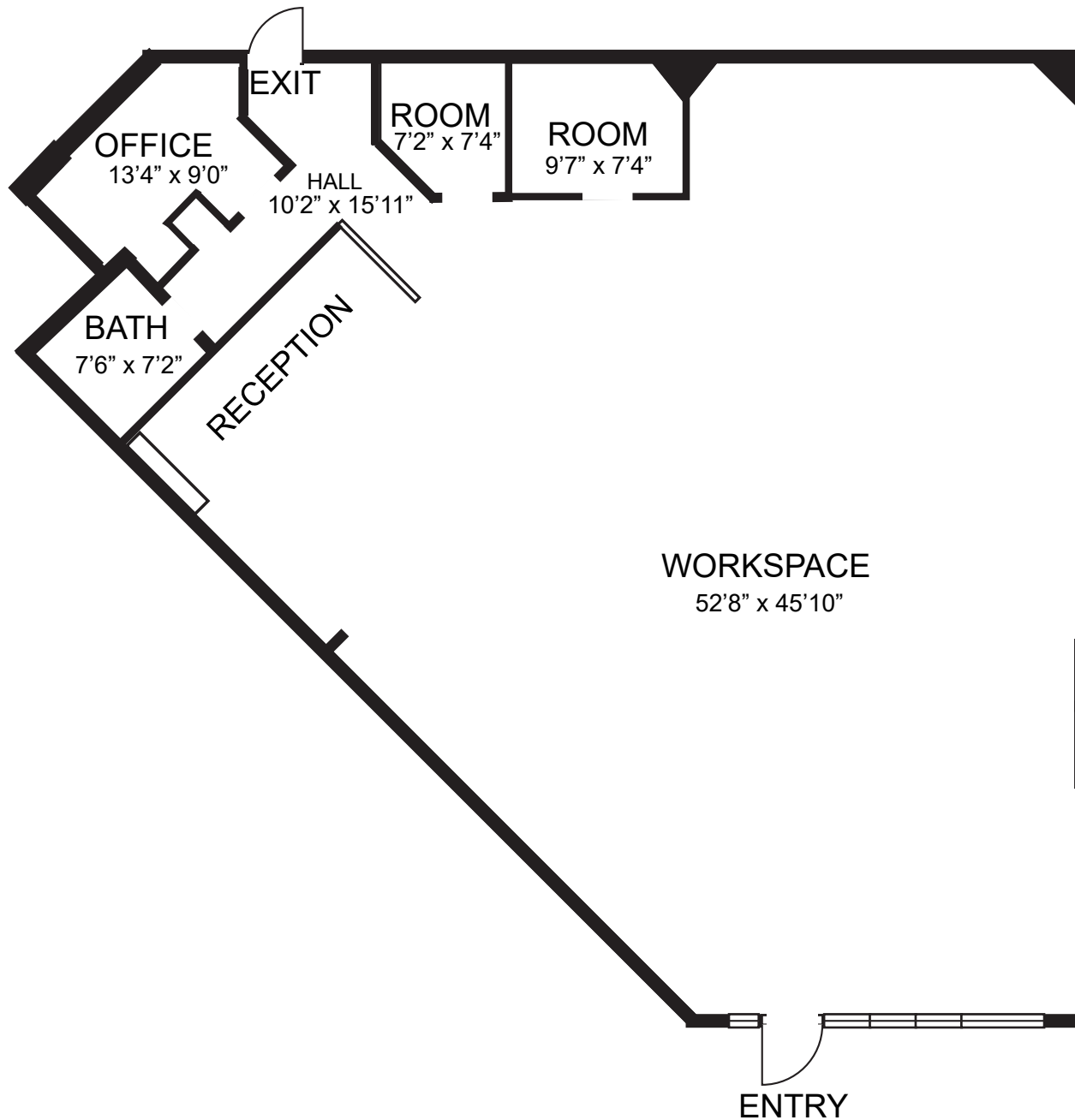
---

**NEARBY SHOPPING, DINING, AND OTHER AMENITIES:**

Albertsons, Long John Silvers, Whataburger, Dairy Queen, Starbucks, Superstition Springs Mall, Winco, Costco, Target, Banner Health, United States Post Office

---





**NOT TO SCALE**

All information furnished regarding property for sale, rental or financing is from sources deemed reliable, but no warranty or representation is made to the accuracy thereof and same is submitted to errors, omissions, change of price, rental or other conditions, prior to sale, lease or financing or withdrawal without notice. No liability of any kind is to be imposed on the broker herein. This information has been secured from sources deemed reliable, however, we make no warranties as to its accuracy.

